

EOS 5D MarkII

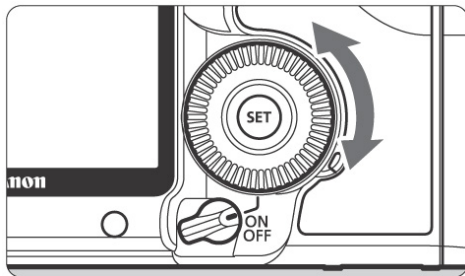
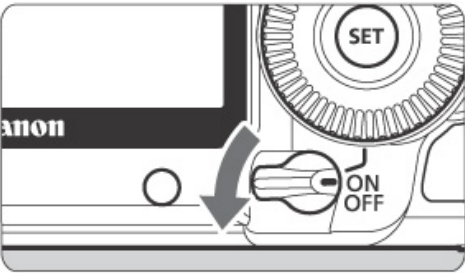
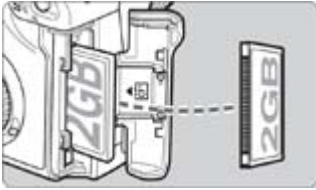
Firmware Update Procedures

Precaution

- A power failure during the firmware writing operation may disable the camera.
 - Use a fully charged Battery Pack or dedicated AC Adapter Kit (Optional) ACK-E6 for the firmware update.
 - Do not shut off the power during the firmware writing operation.
 - Do not open the CF card slot cover during the firmware writing operation.
- Do not press any camera buttons during the firmware writing operation.

Firmware Update Procedures

- In the following instructions, “X.X.X “ or “x.x.x” indicates either the current firmware version or the firmware version for the update.



(1) Format the CF Card

Be sure to carefully review the contents of the CF card before formatting.

Insert the CF card into the camera, and turn the Power Switch <ON>.

Press the <MENU> button.

Rotate the Main Dial and the Quick Control Dial to select the [Format] item, and press the <SET> button.

Rotate the Quick Control Dial to select the [OK], and press the <SET> button.

Turn the camera <OFF> and remove the CF card from the camera.

(2) Download the firmware update file from the Web page.

Please download the compressed, self-extracting file that matches your computer's operating system.

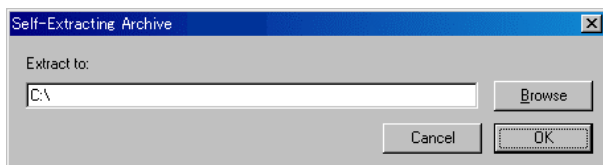
Extract the contents of the downloaded file to create the firmware update file. (*1)

Confirm the file size of the firmware update file. (*2)

If the file size differs, please download the file again from the Web site.

The name of the firmware update file is "5d200xxx.fir". ("xxx" will be different for each firmware version.)

The name and size of the firmware update file can be checked on the Web site.



(*1)The way to extract the contents of the downloaded file.

Windows

Double-click the downloaded file.

Clicking [OK] will cause the file's contents to be extracted and the firmware update file to be created.

Macintosh

The downloaded file will automatically self-extract, creating the firmware update file.

In the case the downloaded file do not automatically self-extract, double-click the downloaded file.

(*2)The way to confirm the file size.

Windows

Right-click the icon of the firmware update file and select the [Properties] command from the pop-up menu that appears.

Macintosh

Select the icon of the firmware update file, and then select the [Get Info] command from the [File] menu.

- In case of using the CF card reader, follow the procedure from Step (3-1) onward. In case of not using the CF card reader, follow the procedure from Step (4-1) onward.

(3-1) Copy the firmware update file to the CF card.

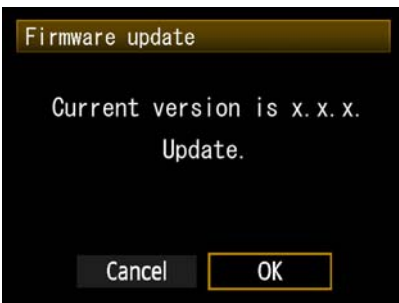
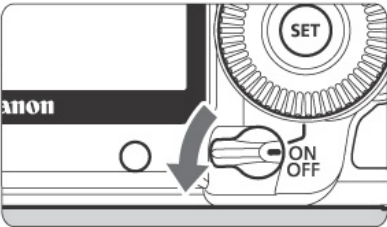
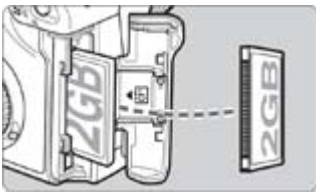
Insert a CF card that has been formatted in the Camera into the CF card reader.

Copy the firmware update file to the first window that appears when the CF card is opened (the root directory).

Remove the CF card from the card reader.

*When removing the CF card, be sure to do so as described in the documentation for the computer or the card reader.

*If the firmware update file is placed in subfolder of the CF card, the camera will not see it.



(3-2) Start the firmware update.

Rotate the Mode Dial to select <P> mode (or any mode other than Fully-Automatic Modes).

Insert the CF card with the firmware into the camera.

Turn the Power Switch <ON>, and then press the <MENU> button to display the menu.

Rotate the Main Dial and the Quick Control Dial to select the "Firmware Ver.x.x.x" item at the bottom of the "Set-up 3 (Yellow)", and then press the <SET> button.

The firmware update screen will appear.

Turn the Quick Control Dial, select [OK], and then press the <SET> button.

Follow the procedure from Step (5) onward.

*If the firmware update screen does not appear on LCD monitor, the firmware update file may not have been properly copied to the CF card, so please try again starting from step (1).

(4-1) Connect the camera and the computer.

Rotate the Mode Dial to select <P> mode (or any mode other than Fully-Automatic Modes).


Insert a CF card that has been formatted in the camera into the camera.

Connect the camera and the computer with the USB cable, and then set the camera's power switch to <ON>.

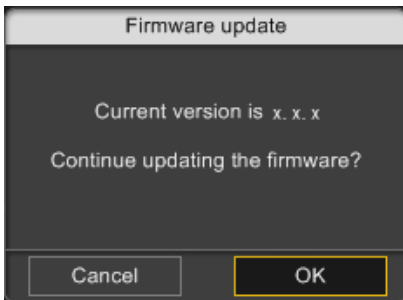
(4-2) Start the firmware update.

Start EOS Utility.

Click the [Camera settings / Remote shooting] button.

Click [].

Click the [Firmware Ver x.x.x].

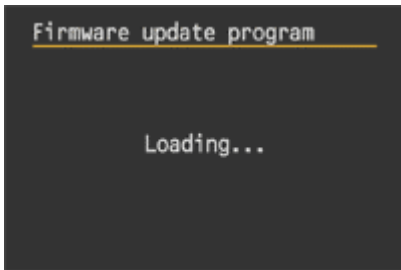


The firmware update screen will appear on the computer screen.

Click [OK].

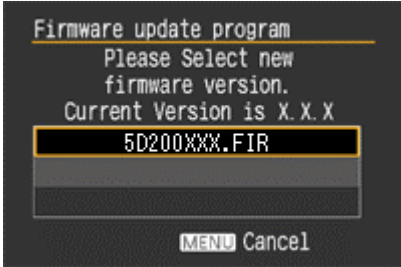
The firmware update file will be copied to the CF card by following the on-screen instructions to select it.

Follow the procedure from Step (5) onward on the camera.



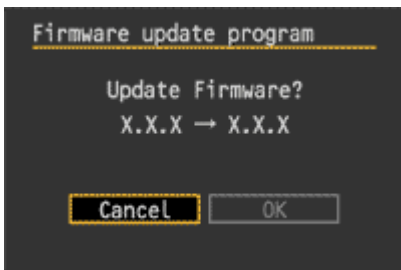
(5) Update the firmware.

The message on the left will appear on the LCD monitor, and the camera will check the version of the firmware update file.

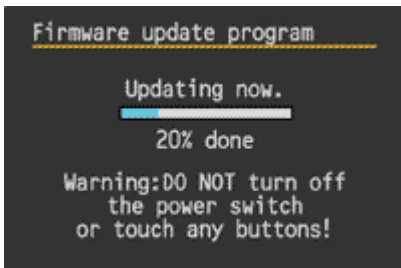


The screen shown on the left will appear on the camera's LCD monitor.

If you press the <SET> button, a confirmation screen will appear, so check the firmware update shown, rotate the Quick Control Dial to select [OK], and press the <SET> button again to start the firmware update.



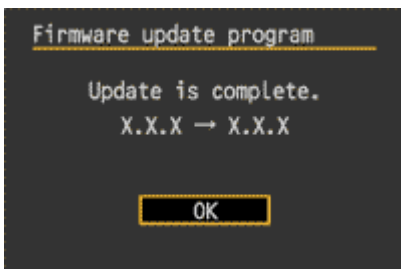
The message on the left will appear during the update.



(6) Complete the firmware update.

When the update is completed, the message on the left will appear on the LCD monitor.

Complete the firmware update by pressing the <SET> button.



The firmware update is now completed.

When the firmware update operations are finished, turn the camera <OFF> and remove battery from the camera for at least two seconds. This will cause the new firmware to take effect after the battery has been reloaded and the camera is turned on.

Format the CF card before using it again.

Verifying the firmware Version

Turn the Power Switch <ON>, and press the <MENU> button. Rotate the Main Dial and the Quick Control Dial, and you will see the "Firmware Ver.X.X.X" at the end of the settings shown in "Set-up 3 (Yellow)", which is the currently installed firmware version number.



Note: Select P mode (or any mode other than Fully-Automatic Modes). The version of the firmware will not appear in the Fully-Automatic Modes.

If an ERROR message appears during the firmware update

In this screen appears, remove the battery and check to make sure that there are no problems with the battery capacity or with the firmware update file on the CF card.

If there are no problems, repeat the update operations again.

If the problem persists, please contact the Canon Service Center in your region.

